

Champion Trikes

EZ-Steer Installation Guide

For

2007-Up Kawasaki Vulcan 900 Motorcycles Classic, Classic LT, and Custom Models

Rev. Date 02/12/2013

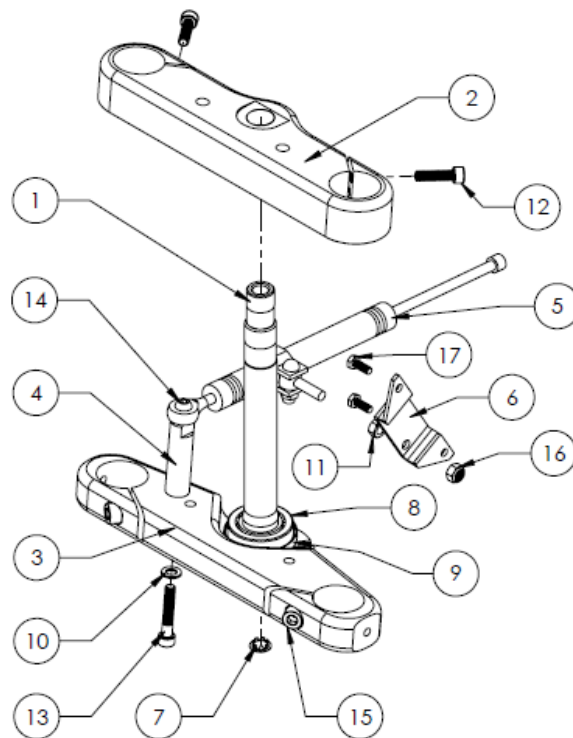


Note: Above CAD picture is for illustrative purposes to show main components of EZ Steer.

Champion Motorcycle Accessories International, Inc.
Dba Champion Sidecars
11841 Monarch Street, CA 92841
(800) 875-0949 (714) 847-0949 Fax (714) 847-1539
www.championtrikes.com

Parts Illustration

BALLOON #	DESCRIPTION	ITEM NO.	QTY.
1	STEM	EZ-KV2-001	1
2	TOP CLAMP	EZ-KV2-002	1
3	BOTTOM CLAMP	EZ-KV2-003	1
4	POST, DAMPER	EZ-KV2-004	1
5	DAMPER, STEERING	EZ-KV2-005	1
6	BRACKET, DAMPER	EZ-KV2-006	1
7	PLUG, STEM	EZ-KV2-007	1
8	BEARING, BOTTOM	BE-KV0-001	1
9	SEAL, BOTTOM BEARING	SE-KV0-001	1
10	M8 FLATWASHER	HW-M08-010	1
11	M8x1.25 HEX NUT	HW-M08-019	1
12	M8x1.25x30 SHCS	HW-M08-022	2
13	M8x1.25x45 SHCS	HW-M08-028	1
14	M8x1.25x30 BHCS	HW-M08-036	1
15	M10x1.25x30 SHCS	HW-M10-053	2
16	M8x1.25xNYLOCK NUT	HW-M08-008	1
17	M6x1.0x16 HHCS	HW-M06-016	2



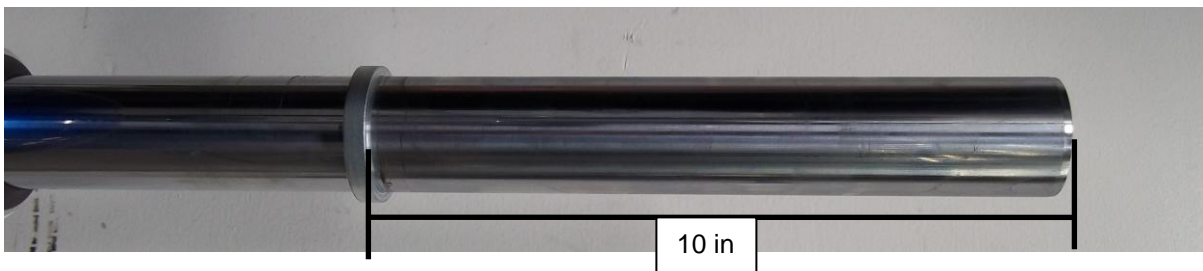
EZ Steer Instructions

WARNING: The Champion EZ-Steer Kit is designed to be used only with a sidecar or trike application.

Installation of the Champion EZ-Steer system is similar to the installation of the OEM triple clamp of your Kawasaki motorcycle. We recommend that you use an OEM service manual and follow the prescribed disassembly, installation, and torque specifications unless otherwise stated below.

Installation Notes

1. Raise and support motorcycle off the ground.
2. Protect gas tank and front fender with towel.
3. Remove headlight from bottom fork clamp.
4. Remove front turn signal assembly.
5. Disconnect front brake caliper from forks.
6. Loosen handlebar risers.
7. Remove handlebars with risers and rotate back onto the gas tank.
8. Loosen top clamp fork pinch bolts.
9. Loosen bottom clamp fork pinch bolts.
10. Remove entire fork and wheel assembly from the motorcycle.
11. Remove upper fork covers with rubber gaskets.
12. Remove top stem nut.
13. Remove top clamp.
14. Bend up tabs on stem nut lock washer using a flat blade screwdriver.
15. Remove top spanner nut and lock washer from stem.
16. Remove lower spanner nut using special Kawasaki tool (57001-1100).
17. Slide bottom clamp and stem out of the neck.
18. Remove lower fork covers, rubber gaskets, and shims from the forks.
19. Adjust collar position on fork tubes to 10 inches as seen.



20. Install lower fork covers, rubber gaskets, and shims onto the forks.
21. Remove old lower bearing race from neck.
22. Install new supplied lower bearing race into neck.

23. Install damper post to bottom clamp with M8x1.25x45mm SHCS and washer. Torque to 24 ft-lbs.



24. Grease lower stem bearing and install the new stem/bottom clamp assembly into the neck.

25. Install the OEM top stem bearing, seal, and plastic cap.

26. Install OEM lower spanner nut and torque to 40 ft-lbs using special Honda tool (07916-3710101).

Move bottom clamp left to right several times and torque again to 40 ft-lbs.



27. Install OEM spanner nut lock washer and tighten upper spanner nut.

28. Line up upper and lower spanner nuts then bend down the tabs on the spanner nut lock washer.

29. Attach upper fork covers and gaskets to bottom fork clamp by loosely tightening the bolts.

30. Rotate the handlebars in front of the fork clamp with the cables running between the fork covers.

31. Install new top fork clamp with OEM washer and top stem nut hand tight.



32. Ensure the fork clamp bolts are loose and slide the fork tube wheel assembly into the fork clamps until the top of the lower chrome covers contacts the bottom fork clamp. The top cap of the fork tubes should stick out slightly from upper fork clamp.



33. Support tire to keep the forks from sliding out of the fork clamps.
34. Torque top stem nut to 36 ft-lbs.
35. Tighten supplied pinch bolts, M10x1.25x30mm socket head cap screws, on bottom fork clamp. Torque to 25 ft-lbs.
36. Tighten supplied pinch bolts, M8x1.25x30mm socket head cap screws, on top fork clamp. Torque to 15 ft-lbs.

37. Attach handlebars/risers to upper fork clamp and torque handlebar riser bolts to 25 ft-lbs.



38. Install front caliper and torque to 25 ft-lbs.

39. Attach front turn signal assembly to forks.

40. Acquire steering damper and remove damper cylinder from clamp.

41. Install steering damper clamp rod end to steering damper bracket as shown using jam nut and nylock nut.

Make sure the stud is flush with the face of the nylock nut on the backside of the bracket.



42. Install steering damper clamp to rod end using the included hardware.



43. Remove the 2 screws holding the wire loom bracket in front of the gas tank on the right hand side.



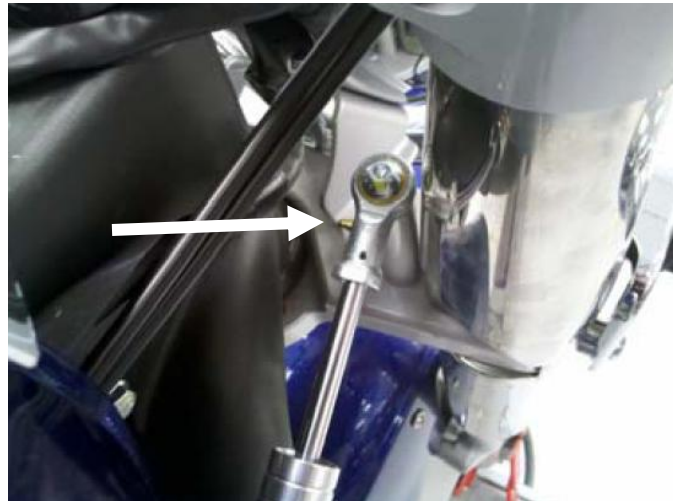
44. Install the steering damper bracket/clamp assembly to the frame with OEM wire loom. Torque screws to 4.5 ft-lbs with Loctite 243.



45. Slide damper through clamp until 2-1/4" from end of damper to face of clamp and tighten.



46. Position Zerk fitting towards Trike as indicated in picture below. Attach damper to post on lower fork clamp with M8x1.25x30mm BHCS. Torque bolt to 24 ft-lbs with Loctite 243.



47. Set steering damper to medium (middle) setting by rotating the adjustment knob.



48. Attach headlight housing using the OEM hardware.
49. Install headlight using the OEM hardware.
50. Ensure the bike is complete and safe before operating.

EZ-Steer Maintenance

The bearings in your EZ-Steer kit are normal wear items, not subject to replacement under Champion's one year Limited Warranty for the product. Failure to follow your motorcycle manufacturer's recommendations for periodic OEM triple-tree maintenance will accelerate the wear on these bearings.